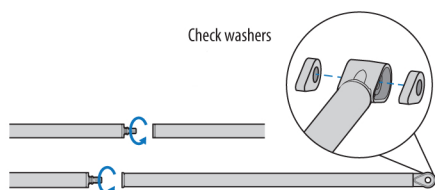
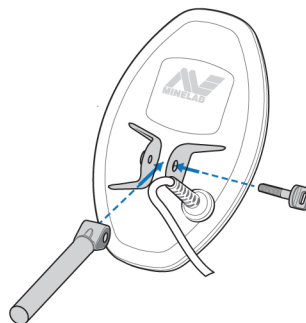


Assembly

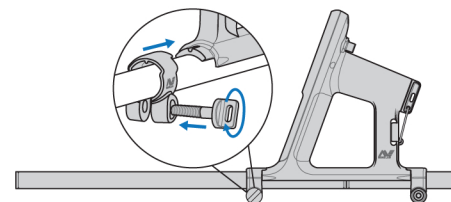
- 1**
Screw mid, lower & upper shafts together



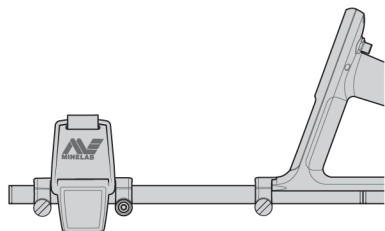
- 2**
Attach lower shaft to coil



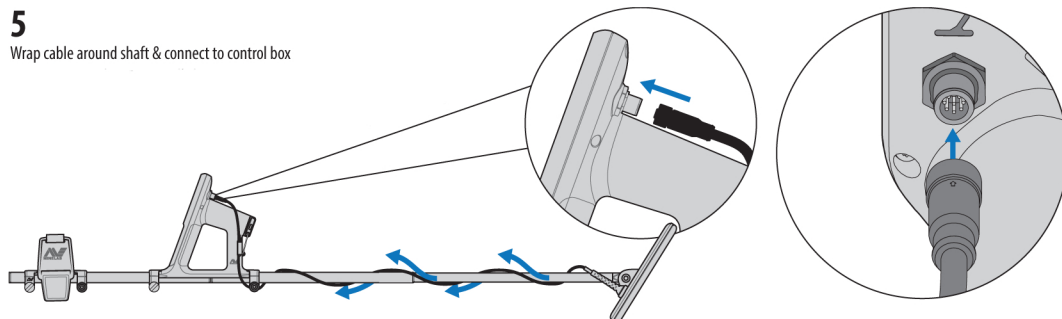
- 3**
Attach control box to upper shaft



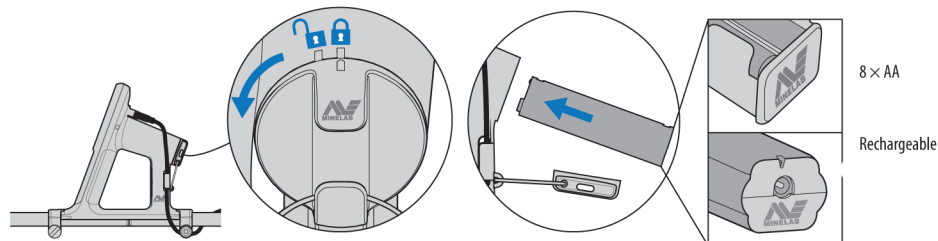
- 4**
Attach armrest to upper shaft



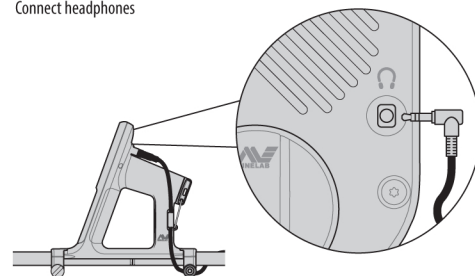
- 5**
Wrap cable around shaft & connect to control box



- 6**
Insert batteries

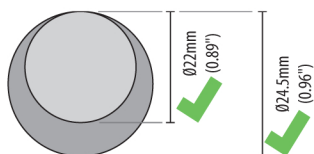


Connect headphones

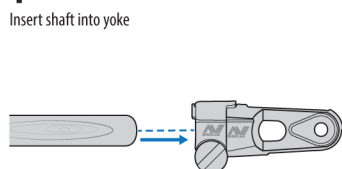


Universal Shaft Adaptor

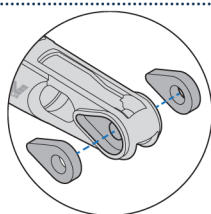
Alternative plastic shaft or broomstick



- 1**
Insert shaft into yoke



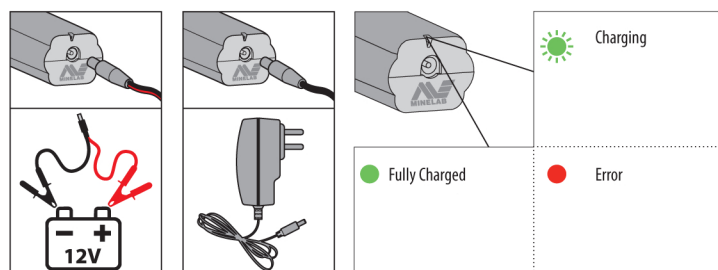
Check washers



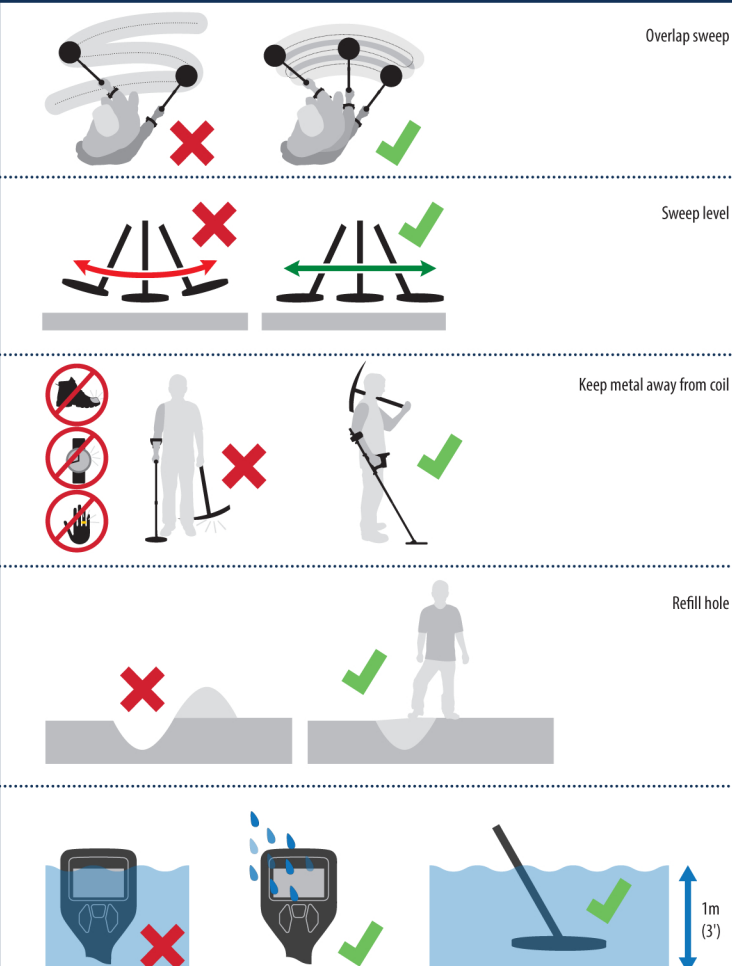
- 2**
Follow steps 2-6 of Assembly



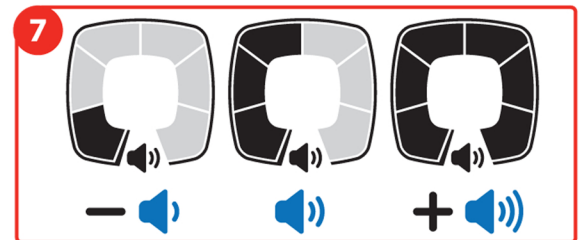
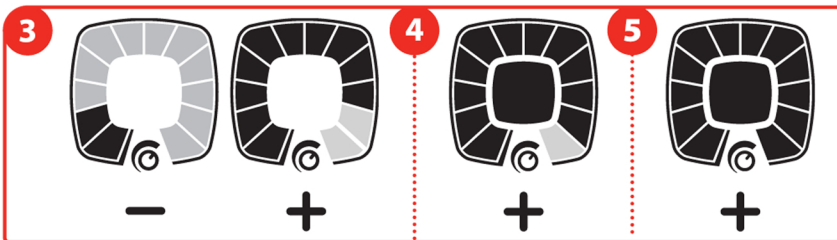
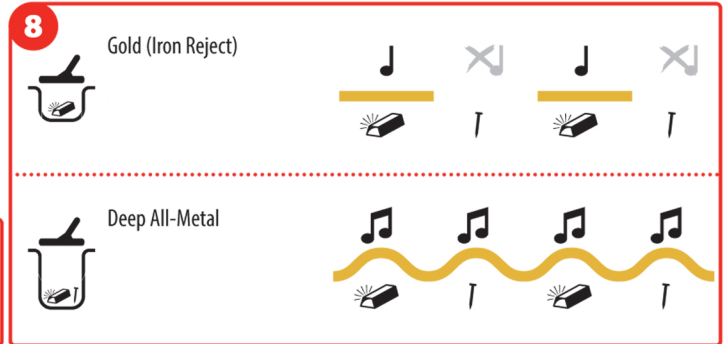
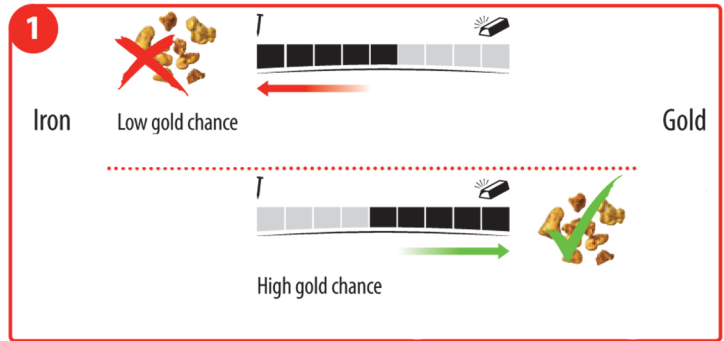
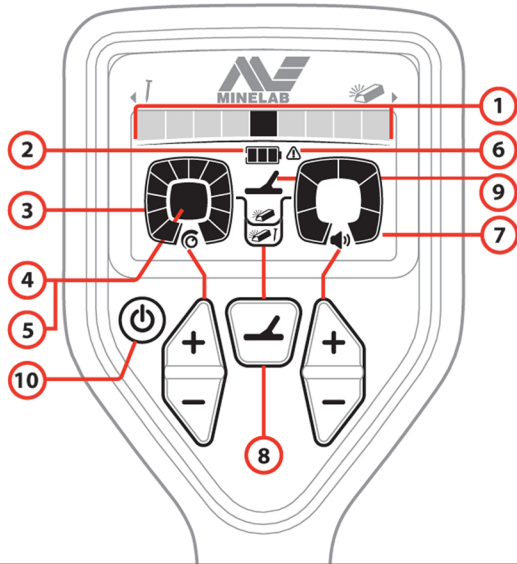
Battery Charging



Detecting Basics



Control Panel



- EN**
1. Gold Chance Indicator
 2. Battery Level
 3. Sensitivity Adjust (1-10)
 4. Auto Sensitivity (11)
 5. Auto + Sensitivity (12)
 6. Error Indicator
 7. Volume Adjust (1-6)
 8. Detect Mode
 9. Ground Balance
 10. Power

