



Scan the QR code or visit [www.minelab.com/manticore](http://www.minelab.com/manticore) for all product downloads including the full-length User Manual, specifications, software updates and learning resources.



Get these languages and more:

**EN** English    **FR** français    **PT** Português  
**DE** Deutsch    **JP** 日本語    **RU** русский  
**ES** Español    **KO** 한국어    **ZH** 中文

For product compliance information:

⚙ Settings > ⚙ General Settings > 📄 Compliance

[minelab.com](http://minelab.com)

4901-0315-1



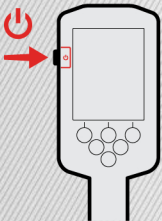
**MANTICORE®**

## GETTING STARTED GUIDE

## QUICK START

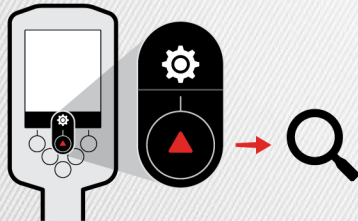
**1**

**TURN ON**



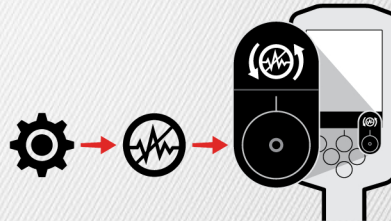
**2**

**SELECT SEARCH MODE**



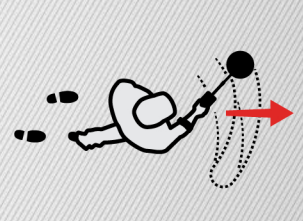
**3**

**NOISE CANCEL**



**4**

**GO DETECTING**



## SEARCH MODES



### ALL-TERRAIN

Great for high-trash recreational areas, fields and historical locations including most general detecting.



### BEACH

Perfect for all salty conditions — dry sand, wet sand, surf and underwater.



### GOLDFIELD

Ideal for gold nugget prospecting in mineralised goldfield locations.



GENERAL



FAST



LOW CONDUCTORS



HIGH CONDUCTORS



TRASH REJECT



GENERAL



LOW CONDUCTORS



DEEP



SURF & SEAWATER



GENERAL

Can't decide which Mode to use?  
Use the General Mode for your detecting location.

