



X-TERRA PRO

GETTING STARTED GUIDE



This Getting Started Guide and the full length X-TERRA PRO® User Manual are available to download online.



Get these languages and more:

DE Deutsch

FR français

KR 한국어

RU русский

ES Español

JP 日本語

PT Português

ZH 中文

minelab.com

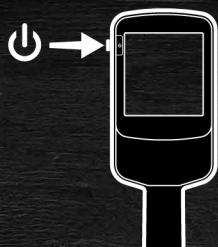
4901-0418-1



QUICK START

1

TURN
ON



2

SELECT
SEARCH MODE



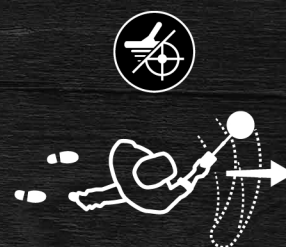
3

NOISE
CANCEL



4

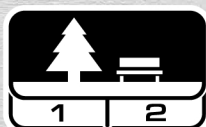
GO
DETECTING



SEARCH MODES

PARK

Great for high-trash recreational areas, including most general detecting.



General and
Coins

Fine
Jewellery

FIELD

Ideal for detecting in historical fields for the widest range of target sizes.



Coins and
Artefacts

Fine Coins and
Artefacts

BEACH

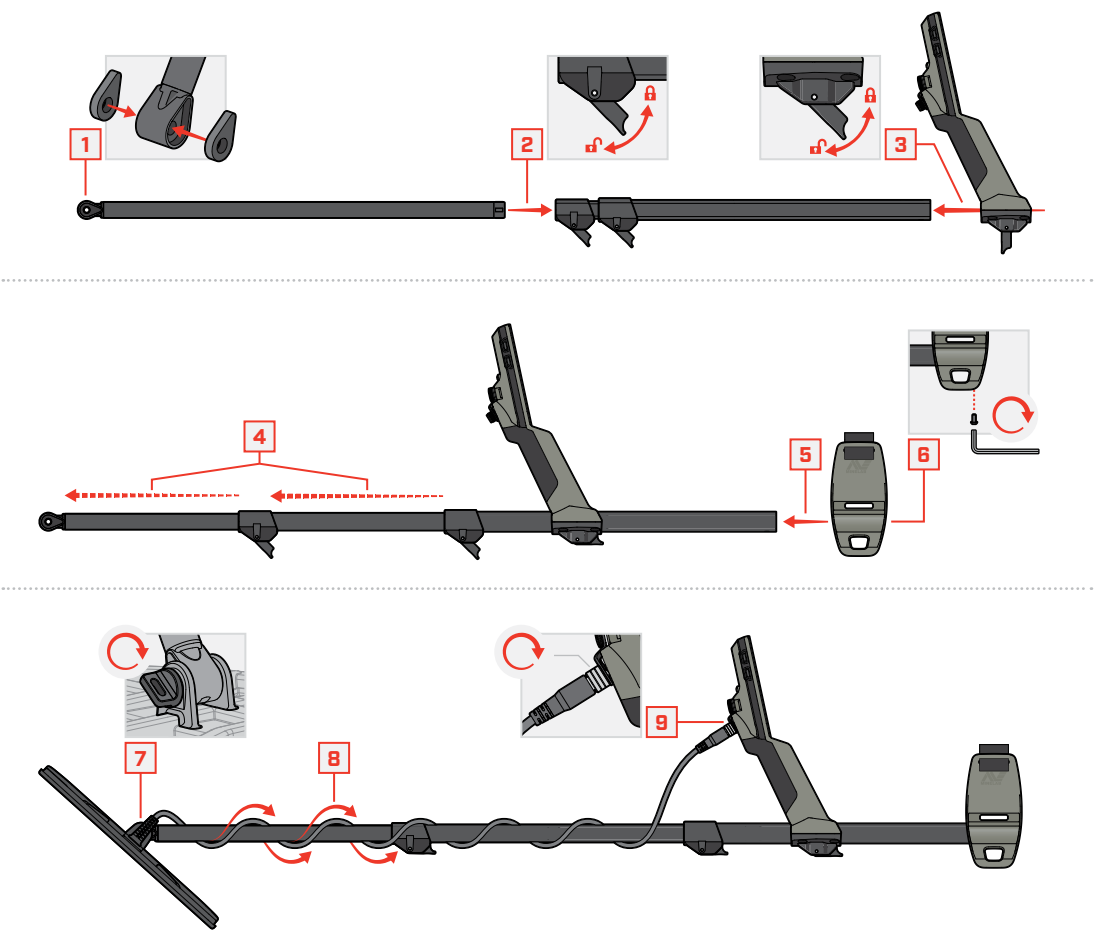
For all salty conditions — dry sand, wet sand, surf and underwater.



Wet and
Dry Sand

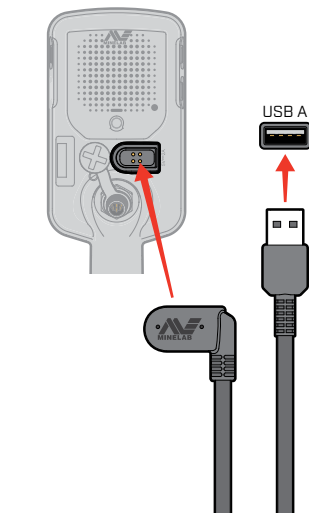
Underwater
and Surf

ASSEMBLY



CHARGING

5-6 HOURS



! Charge your detector with a good-quality USB charger that has a minimum charging capacity of 2A @ 5V. Risk of USB charger failure if a low quality charger is used.

Look for the following marks on USB chargers:

CE ENEC Intertek

CONTROLS & DISPLAY

